

Before You Start

Your new Solid Core Door is very heavy, so plan the installation carefully and seek help for any lifting you plan on doing. These doors typically weigh in at over 60Kgs each.

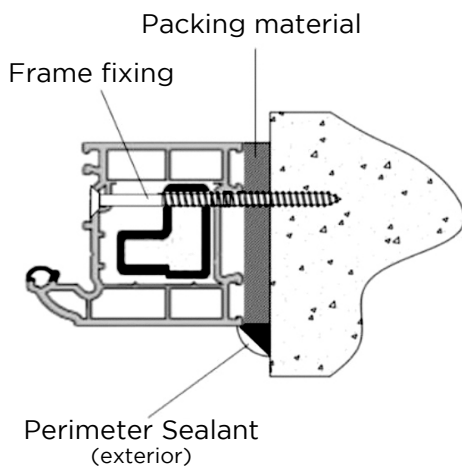
Once received, please remove all packaging and protective tape and check the door is in perfect condition. Before you remove your existing door, check that the new one is correct as per your order specifications as once the door is fitted we cannot offer any returns, alterations or compensation. When it comes to removing your existing door, take extra care not to damage the existing brickwork and plaster when removing the frame as this will result in having to carry out more work. Once the door and the frame are removed, clean off the excess silicone and mastic paste so you have a completely fresh reveal.

Things to Consider

The positioning of the new frame in the aperture is fundamental to the success of the installation. In general, the replacement doorset shall:

- Bridge the cavity.
- Cover the damp proof course.
- Be set back as far as possible in the aperture to minimise exposure to the elements.

Fitting The Door



Fixing methods will be influenced by movement, such as:

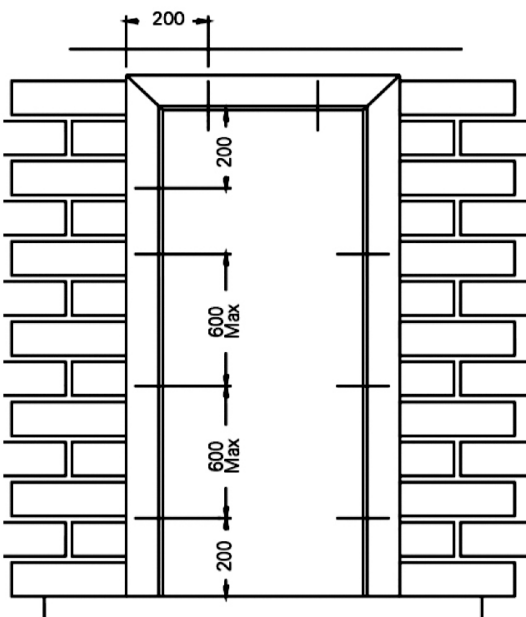
- The presence or absence of a wall cavity
- The nature of any cavity
- The relative positions of the frame and cavity
- The position of the plaster line, and the need to preserve the interior decorations
- The design of the reveal Fixings Through-frame fixings should be a minimum 100mm length, and should penetrate a minimum of 50mm into the substrate.
- Avoid fixing into mortar line where possible

Fixing distances

Generally, all four sides of the frame shall be secured using the following guidelines to determine the fixing spacings:

- Corner fixings should be a min of 150mm and a max of 250mm in from the external corner to prevent cracking welds
- No mullion or transom fixings should be closer than 150mm, or further than 250mm from the centre line of a mullion or transom
- Intermediate fixings should be at centres no greater than 600mm
- There must be a minimum of 3 fixings on each jamb

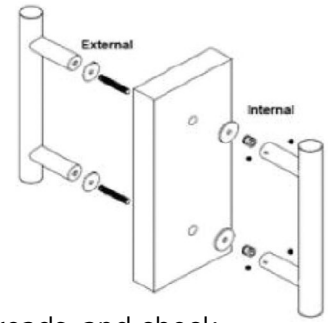
NOTE: If it is impossible to find a preferred fixing position, then the nearest possible fixing should be used.



Door Furniture

The door set will be supplied with a Vac-Pack, which contains cylinder, numerals, handles, and chain etc.

To fit the door handles, locate the spindle through the square hole in the lock. Align the handle pins in the internal half of the handle with the pre-drilled holes in the door sash. Using the handle screws provided screw the handle screws into the external handle half, checking alignment and function. Do Not over tighten the handles, as this may lead to operational problems or component failure. Some doors can be supplied with a Bar Handle(s), See opposite assemble diagram. Do not over tighten the screw threads, and check alignment once installed. Also ensure silicone is applied to the holes prior to fixing the bar handles.



Numerals should be positioned in the desired location on the door sash, as not to interfere with operation. The holes in the numerals should be used as a template for fixing. It is recommended that you drill a pilot hole, insert silicone to seal the hole and use the screws provided in the Vac-Pack.

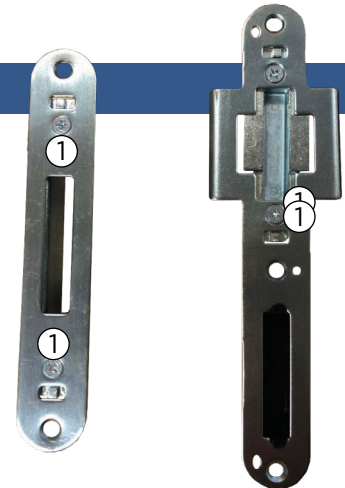
Door Adjustment

It is imperative that doors are fitted plumb in all planes, you may be required to 'toe and heel' the frame to ensure gaps around the door are consistent. DO NOT rely on the hinge adjustments to make the door function. Hinge and keep adjustment are intended for fine tuning and/ or adjustments if the door has settled after installation.

Keep Adjustments

Compression down the lock side of the frame can be increased/ decreased by adjusting the keeps by following the instructions below:

- Lightly loosen screws (1) to avoid losing retaining nut.
- To increase compression, move the keep pocket towards the gasket on the frame.
- To decrease compression, move the keep pocket away from the gasket on the frame.
- Once satisfied with the compression tighten screws (1)

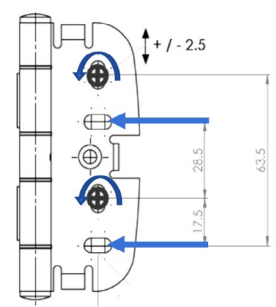
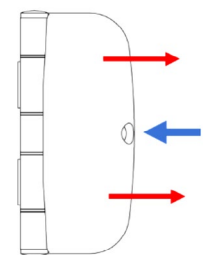


Hinge Adjustment

TOOLS REQUIRED: Manual Cross Head screw driver, Plastic Paddle, Powered Drill with Cross Head Driver bit

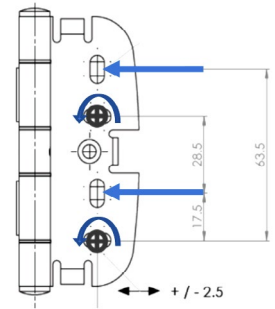
The Solidcore hinge has 2.5mm of adjustment in both the vertical and horizontal directions. To adjust the hinge first remove the small coloured cover cap. Remove the screw holding the cover cap secure. Slide the cover cap off the hinge to reveal the four fixing screws.

To adjust vertically. On all hinges - Remove the 2 screws indicated (horizontal slot) and loosen the 2 screws (vertical slot). Adjust the height position using an appropriate paddle. Tighten the 2 screws (vertical slot) and check air gaps. Once the door is operating correctly and the air gap is satisfactory, return the 2 screws removed earlier. Note it may be necessary to create new fixing holes. A final fixing screw should be added to the centre hole to 'lock' the hinge in position. Return the cover cap and secure to the hinge using the short fixing screw. Cover screw with the coloured cover cap.



Hinge Adjustment.... continued

To adjust horizontally. On all hinges - Remove the 2 screws indicated (vertical slot) and loosen the 2 screws (horizontal slot). Adjust the horizontal position using an appropriate paddle. Tighten the 2 screws (horizontal slot) and check air gaps. Once the door is operating correctly and the air gap is satisfactory, return the 2 screws removed earlier. Note it may be necessary to create new fixing holes. A final fixing screw should be added to the centre hole to 'lock' the hinge in position. Return the cover cap and secure to the hinge using the short fixing screw. Cover screw with the coloured cover cap.



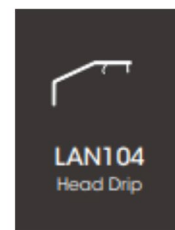
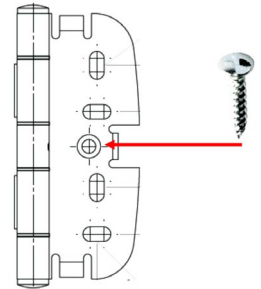
IMPORTANT.

When tightening the cover cap screw, DO NOT use a powered drill as this may result in stripping the threads in the hinge invalidating your warranty. Use a manual cross head screw driver for this function.

Open Out Doors

To secure hinge hardware on open outdoors, remove the hinge cover caps and affix the supplied security screws in the centre hole on all hinges. Replace the cover cap and secure in place.

Open out doors are supplied with a section of LAN104, this is clipped into the head of the door frame to protect the property from water ingress from heavy rainwater. Cut the profile to length and clip into the frame prior to installation.



Composite Door Collection

Installation Guide

"All the information in this installation guide is provided for guidance only and is given in good faith, but without warranty or guarantee of any kind, whether implied or expressed. Our policy is to continually improve products, therefore methods, material and changes of specification may be made from time to time without prior notice"