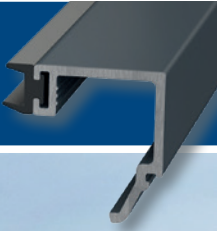


FEATURING SMART'S NEW  
**QUICK  
GLAZE BEAD**



*Introducing...*  
**ALITHERM 400**

Combining outstanding value and quality, with class-leading performance and security, the new Alitherm 400 system provides a range of stylish casement windows and single and double doors.

The system is perfect for a wide variety of projects, including both new build and refurbishment, residential and light commercial applications and is proudly made in Britain by Smart.

Alitherm 400's design incorporates Smart's innovative polyamide thermal break technology, which creates a barrier between the cold air outside and

warm air inside, significantly reducing thermal transmittance and enhancing the system's overall U-value. The system is also fully compliant with changes to Document L of the Building Regulations, is rigorously tested to PAS 24:2016 as standard and exceeds the requirements for weather resistance and security performance.

The image illustrates suitable applications for Alitherm 400 and is not binding in detail or specification.

**DESIGNING PRODUCT  
SOLUTIONS FOR**

- ◆ Building Regulations Compliant  
Fully compliant with changes to Document L of the building Regulations
- ◆ Smart Quick-Glaze Bead  
Featuring integrated gasket and 'tap-in' design for easier fabrication and faster installation
- ◆ PAS 24:2016 Approved  
Enhanced security for aluminium windows and doors
- ◆ Unrivalled Choice of Colour  
In addition to our 5 colour collections, we can colour match any RAL colour
- ◆ Suitable for Residential and Light Commercial Properties



TOP HUNG

TOP HUNG



SIDE HUNG



# Alitherm 400 WINDOWS

The Alitherm 400 window is the first thermally broken aluminium system to feature Smart's pioneering co-extruded glazing gasket. This means the beads are supplied with the glazing gasket post-extruded into the profile. This enables the Quick-Glaze beads to be simply tapped in on site, significantly reducing fabrication and installation time.

Available with a flush or chamfered profile, the slim lines of Alitherm 400 provide excellent weather and thermal performance, as well as the security assurance provided by PAS24 accreditation. While the flush, flat face option is suitable for off-set, face-mounted espagnolette locks, the chamfered design features a eurogroove, to enable in-line espagnolette locking mechanisms to be used.

## FEATURES AND SPECIFICATIONS

- ◆ Building Regulations Compliant  
Fully complies with changes to Document L of the Building Regulations
- ◆ Quick-Glaze Bead
- ◆ Excellent Thermal Performance  
An extended polyamide thermal break for enhanced thermal performance
- ◆ Suitable for All Lock Types  
Suitable for off-set, face-mounted espagnolette lock mechanisms
- ◆ PAS 24:2016 Approved  
Enhanced security for aluminium windows and doors



\*Results show best result possible dependant on specification.



## FEATURES SMART'S NEW **QUICK GLAZE BEAD**

For installers, Alitherm 400's new, Quick-Glaze Bead is simply tapped in on site with the gasket already in place (rather than beading followed by inserting wedge gaskets), making the installation and glazing process faster, more straightforward and more cost effective.

Smart Quick-Glaze Bead is available in Naturals colours White (WP), Black (BL) and Anthracite Grey (KL005).

## ALITHERM 400 WINDOWS

## ALITHERM 400 DOORS



WINDOW SASH CORNER



WINDOW MULLION



DOOR SASH CORNER



DOUBLE DOOR MEETING STYLE & LOW THRESHOLD

Window Type	Maximum Width (mm)	Maximum Height (mm)	Frame Depth (mm)	Maximum Perimeter (mm)	Glazing Units	Security Standard	Typical U Value <sup>1</sup>	WER <sup>2</sup>	Air Permeability Classification	Water Tightness Classification	Resistance to Wind Classification
Sash dimensions for windows with approved sash profiles:											
Side Hung	864	1400	70	-	24, 28, 32, 36, 40 & 45	PAS 24:2016	1.4 W/m <sup>2</sup> K	Band A	Class 4	AE2400	2000+
Top Hung	1400	1500	70	-	24, 28, 32, 36, 40 & 45	PAS 24:2016	1.4 W/m <sup>2</sup> K	Band A	Class 4	AE2400	2000+
Fixed	2100	2100	70	42	24, 28, 32, 36, 40 & 45	PAS 24:2016	1.4 W/m <sup>2</sup> K	Band A	Class 4	AE2400	2000+

[For sizes outside these parameters, contact the Smart Technical Support team]

Typical Values different glass, profiles and door configurations will vary U Value and Window Energy Rating

1. U Value based on opener next to fixed 1230 x 1480 using glass Centre Pane 1.0

2. WER based on opener next to fixed 1230 x 1480 using glass Centre Pane 1.2 and g value 0.74

